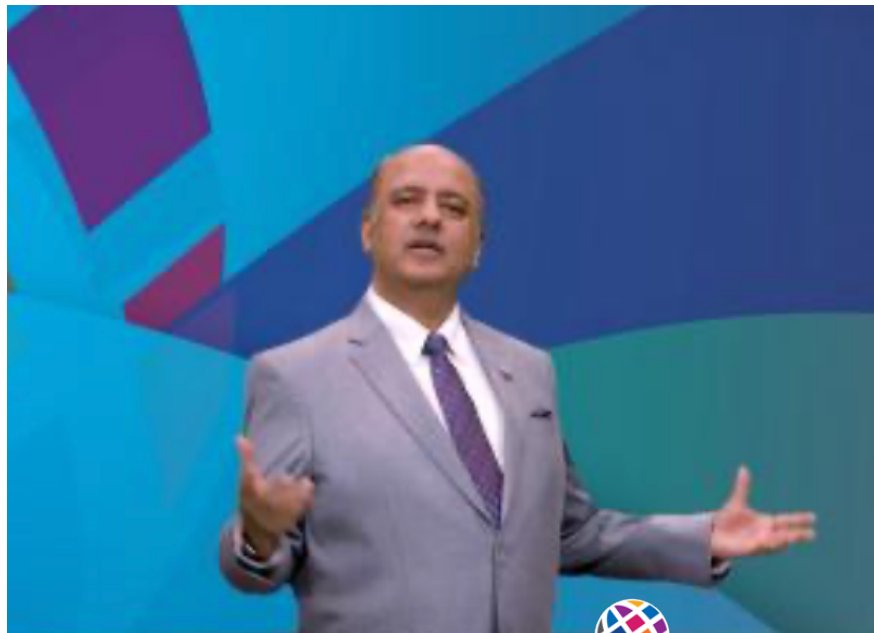


# Agenda

1. Verwelkoming
2. **Prioriteiten van onze Internationale Voorzitter Shekhar Mehta**
3. Terugblik op Districtsinitiatief ter ondersteuning slachtoffers overstromingen
4. Prioriteiten D2130
5. Polaris : hoe gebruik je dit best
6. Lancering programma "Eradicatie van de structurele kinderarmoede in Vlaanderen "
7. Afsluiting en glas van de vriendschap



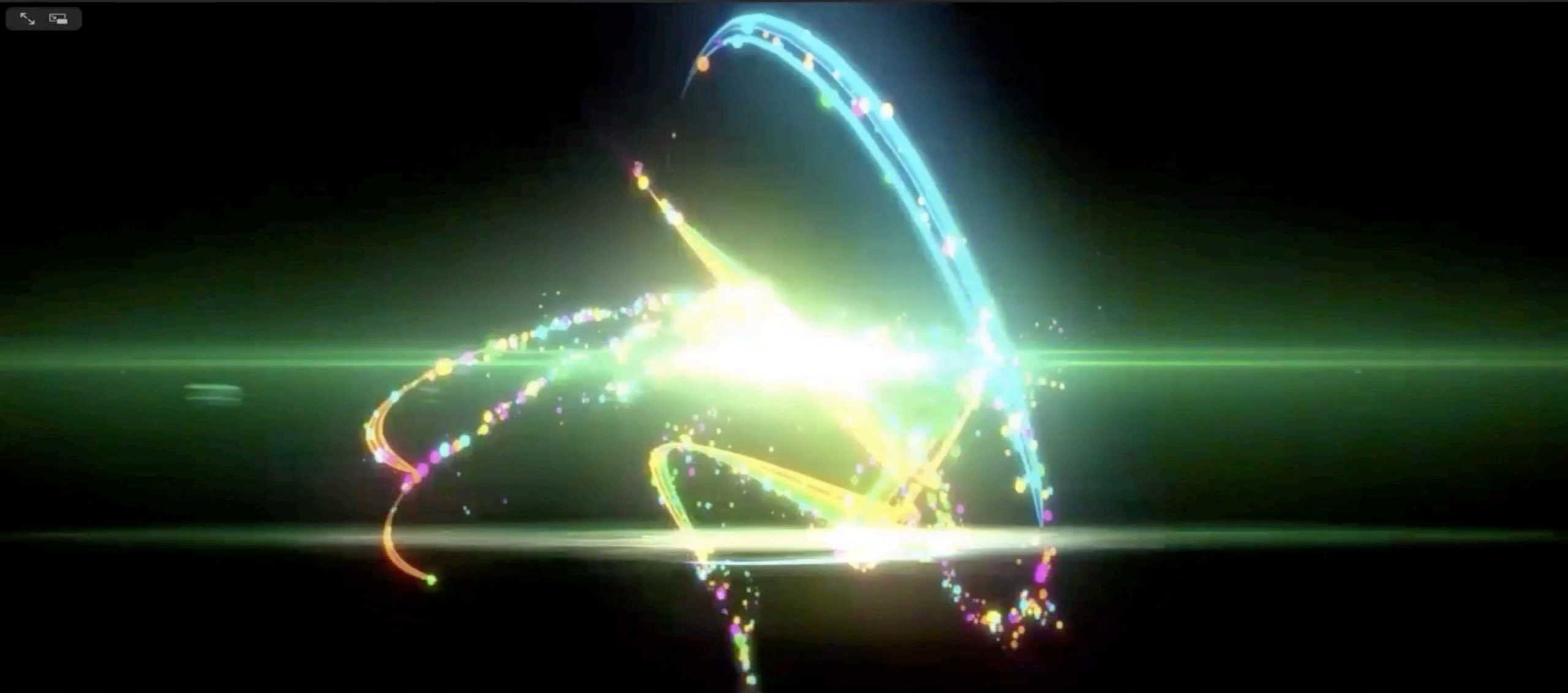
# President RI : Shekar Mehta



N.B. : I cajole you = ik dwing jou



SERVE TO CHANGE LIVES



# President RI : Shekhar Mehta



- RI President-elect Shekhar Mehta is urging members to become **more involved in service projects**, saying that caring for and **serving** other is the **best way to live** because it changes not only other people's lives, but also **our own**.

**SERVE TO CHANGE LIVES**



SERVE TO CHANGE LIVES



SERVE TO CHANGE LIVES



SERVE TO CHANGE LIVES

President RI : Shekhar Mehta

Do More,  
Grow More !



SERVE TO CHANGE LIVES



SERVE TO CHANGE LIVES



SERVE TO CHANGE LIVES

# President RI : Shekhar Mehta : Do More

Verschillende voorbeelden van projecten die hij initieerde.

Eén voorbeeld : Teach program : placing of children in government schools in India ( more than 50.000 students)



SERVE TO CHANGE LIVES

**T**eacher support

**E** – learning

**A**dult involvement

**C**hild development

**H**appy schools

90% of clubs in India participate !



SERVE TO CHANGE LIVES



SERVE TO CHANGE LIVES



SERVE TO CHANGE LIVES

# President RI : Shekhar Mehta :

## Do More

### Big scale projects (Programs of Scale)

Eerste programma is nu goedgekeurd : Zambia Malaria Elimination Program

Goal : reductie van Malaria met 90% in 2 provincies in Zambia ( 1,3 Miljoen mensen)

Programma over 5 jaar met totaal budget van 6M\$, waarvan 2M\$ van de Foundation



SERVE TO CHANGE LIVES



SERVE TO CHANGE LIVES



SERVE TO CHANGE LIVES

# President RI : Shekhar Mehta :

## Grow More : Each One, Brings One

- 20 jaar geleden : 1,2 M leden
- 10 jaar geleden : 1,2 M leden
- Nu : 1,2 M leden
- → 1,3 M leden in 15 maanden
- Vorig jaar : 155.000 nieuwe leden. 18.000 van hen verlaten Rotary binnen het jaar. 50% van de nieuwkomers zijn weg binnen de 3 jaar

→ Each one (Rotarian), bring one (and keep them)



SERVE TO CHANGE LIVES



SERVE TO CHANGE LIVES



SERVE TO CHANGE LIVES



# Each one, brings one : laatste cijfers

| District                              | Zone | INCL<br>Inc / Dec<br>1 July 2020<br>2020 - 2021 |                  |                 | INCL<br>Inc / Dec<br>1 July 2021 *<br>2021 - 2022 * |                  |               |                  |               |
|---------------------------------------|------|---|------------------|-----------------|---|------------------|---------------|------------------|---------------|
|                                       |      | # Club  | # Member         | # Member        | # Club  | # Member         | # Member      |                  |               |
| 6890                                  | 34   | 37  | 1,622            | (61)            | 35  | 1,561            | 35            | 1,566            | 5             |
| 6900                                  | 34   | 70  | 4,048            | (161)           | 71  | 3,887            | 69            | 3,888            | 1             |
| 6910                                  | 34   | 71  | 3,103            | (159)           | 70  | 2,944            | 70            | 2,982            | 38            |
| 6920                                  | 34   | 62  | 2,981            | (173)           | 61  | 2,808            | 61            | 2,787            | (21)          |
| 6930                                  | 34   | 45  | 1,482            | (55)            | 46  | 1,427            | 46            | 1,437            | 10            |
| 6940                                  | 34   | 50  | 2,141            | (104)           | 50  | 2,037            | 50            | 2,041            | 4             |
| 6950                                  | 34   | 48  | 1,769            | (97)            | 48  | 1,672            | 48            | 1,709            | 37            |
| 6960                                  | 34   | 49  | 2,214            | (19)            | 51  | 2,195            | 51            | 2,239            | 44            |
| 6970                                  | 34   | 63  | 3,206            | (122)           | 64  | 3,084            | 66            | 3,161            | 77            |
| 6980                                  | 34   | 48  | 1,697            | (126)           | 47  | 1,571            | 47            | 1,622            | 51            |
| 6990                                  | 34   | 47  | 1,804            | (28)            | 48  | 1,776            | 48            | 1,798            | 22            |
| 7000                                  | 34   | 31  | 945              | (56)            | 32  | 889              | 32            | 885              | (4)           |
| 7020                                  | 34   | 84  | 2,381            | 57              | 83  | 2,438            | 84            | 2,497            | 59            |
| 7030                                  | 34   | 72  | 2,224            | 89              | 73  | 2,313            | 73            | 2,334            | 21            |
| <b># of Districts:14</b>              |      | <b>777</b>                                      | <b>31,617</b>    | <b>(1,015)</b>  | <b>779</b>  | <b>30,602</b>    | <b>780</b>    | <b>30,946</b>    | <b>344</b>    |
| <b>Report Total<br/>Districts:529</b> |      | <b>36,158</b>                                   | <b>1,174,890</b> | <b>(12,120)</b> | <b>36,614</b>                                       | <b>1,162,763</b> | <b>36,815</b> | <b>1,186,271</b> | <b>23,508</b> |



SERVE TO CHANGE LIVES



SERVE TO CHANGE LIVES



SERVE TO CHANGE LIVES

# Each one, brings one : laatste cijfers

| District                 | Zone | # Club       | # Member      | # Member       | # Club       | # Member      | # Club       | # Member      | # Member  |
|--------------------------|------|--------------|---------------|----------------|--------------|---------------|--------------|---------------|-----------|
| 2130                     | 13   | 64           | 2,764         | (37)           | 65           | 2,727         | 65           | 2,718         | (9)       |
| 2140                     | 13   | 81           | 2,843         | (20)           | 82           | 2,794         | 82           | 2,783         | (11)      |
| 2150                     | 13   | 71           | 2,194         | (99)           | 70           | 2,124         | 70           | 2,116         | (8)       |
| 2160                     | 13   | 68           | 2,741         | (68)           | 68           | 2,673         | 68           | 2,670         | (3)       |
| <b># of Districts:22</b> |      | <b>1,358</b> | <b>39,754</b> | <b>(1,185)</b> | <b>1,365</b> | <b>38,569</b> | <b>1,364</b> | <b>38,602</b> | <b>33</b> |



SERVE TO CHANGE LIVES



SERVE TO CHANGE LIVES



SERVE TO CHANGE LIVES

# Each One, Brings One : onze interpretatie

- Het is niet haalbaar om dit letterlijk uit te voeren
- Het is wel haalbaar dat elk actief lid **MINSTENS 1** nieuw lid aanbrengt tijdens zijn/haar lidmaatschap
- Verjonging van het ledenbestand is voor 80%+ van onze clubs een absolute noodzaak
- Commissie Ledenbestand gaat hier in de loop van dit Rotary jaar initiatief nemen.



SERVE TO CHANGE LIVES



SERVE TO CHANGE LIVES



SERVE TO CHANGE LIVES

# Shekhar Mehta : Levensmotto



# Shekhar Mehta : Each one , brings one



# Verschillende clubmodellen : meer flexibiliteit

- Satellite clubs
- Interact clubs
- Virtual clubs (e-clubs)
- Cause-based clubs
- Hybrid clubs
- Passport clubs
- Corporate clubs

→ Each district creates at least 2 new clubs / year



SERVE TO CHANGE LIVES



SERVE TO CHANGE LIVES



SERVE TO CHANGE LIVES

# Shekhar Mehta : belangrijkste boodschappen

- People of Action
- Empowering Girls
- Equity, Diversity and inclusion
- Need to bring in Rotaract
- Large projects



SERVE TO CHANGE LIVES

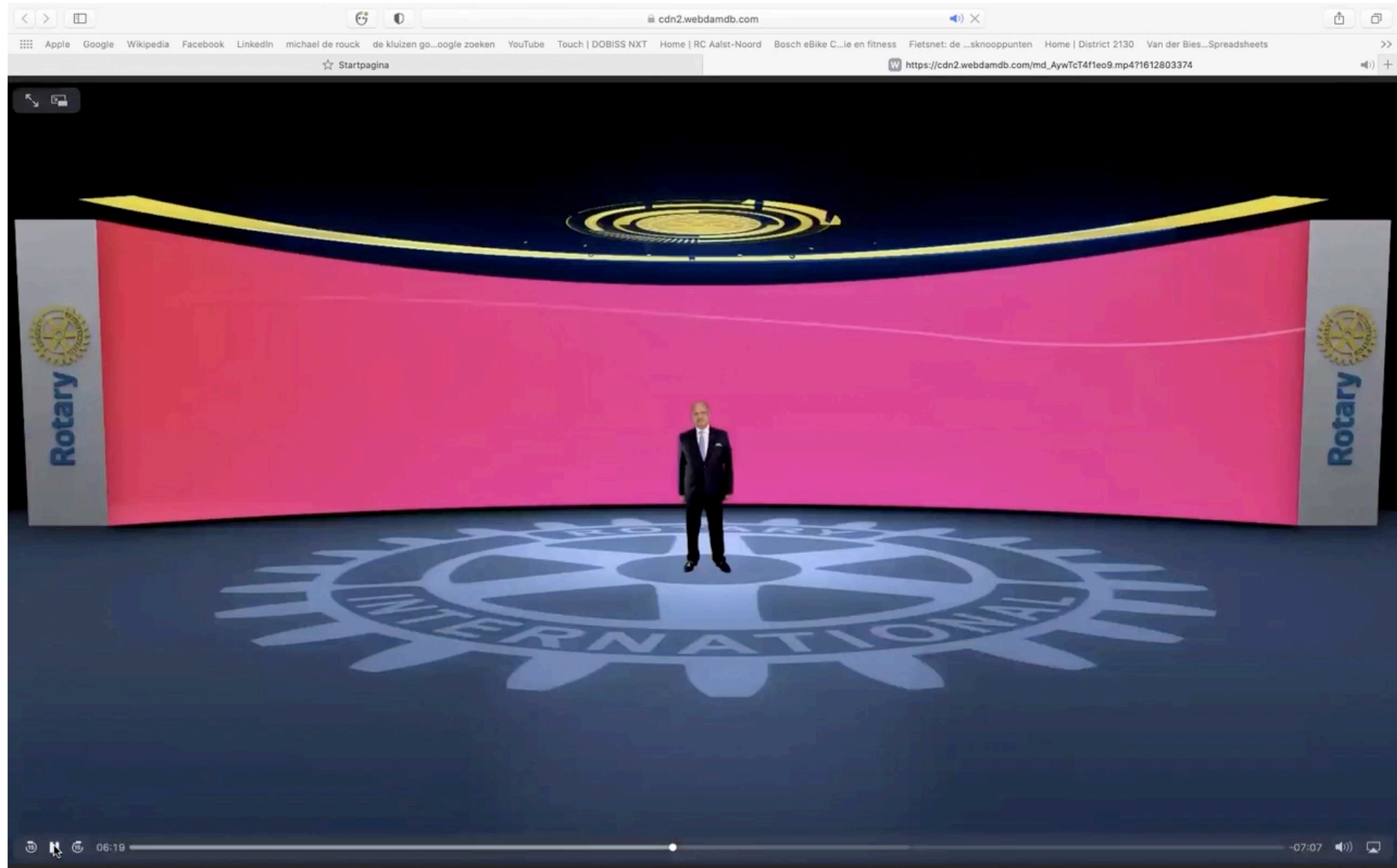


SERVE TO CHANGE LIVES



SERVE TO CHANGE LIVES

# Shekhar Mehta : over retention and dream big





# Shekhar Mehta : belangrijkste boodschappen

- 7th area of focus: environment





# HET LEEFMILIEU BESCHERMEN

## EEN PRIORITEIT VAN ROTARY



SERVE TO CHANGE LIVES



SERVE TO CHANGE LIVES



# FOCUSGEBIEDEN VAN ROTARY



**VREDE EN  
CONFLICTBEHEERSING**



**PREVENTIE EN  
BEHANDELING  
VAN ZIEKTEN**



**WATER, SANITATIE  
EN HYGIËNE**



**GEZONDHEID VAN  
MOEDER EN KIND**



**BASISONDERWIJS  
EN ALFABETISERING**



**ECONOMISCHE EN  
SOCIALE  
ONTWIKKELING**



**LEEFMILIEU**



**SERVE TO CHANGE LIVES**



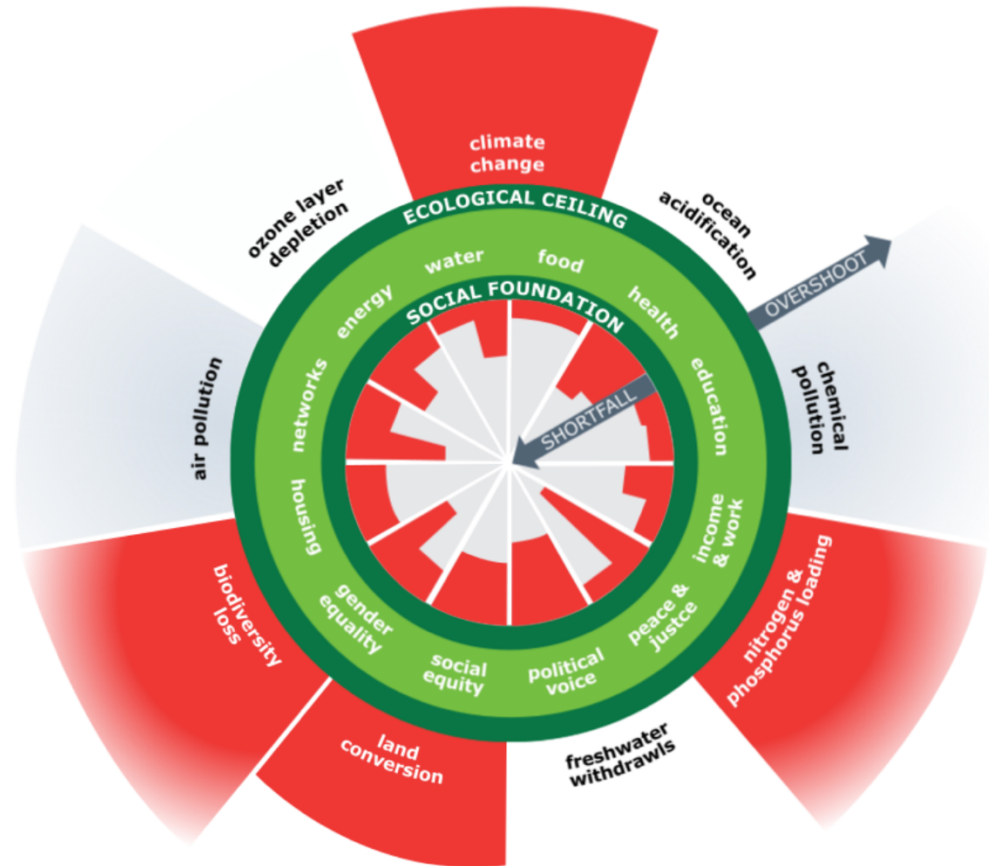
**SERVE TO CHANGE LIVES**



**SERVE TO CHANGE LIVES**

# Donut Economie door Kate Raworth

The Doughnut of social and planetary boundaries (2017)



SERVE TO CHANGE LIVES

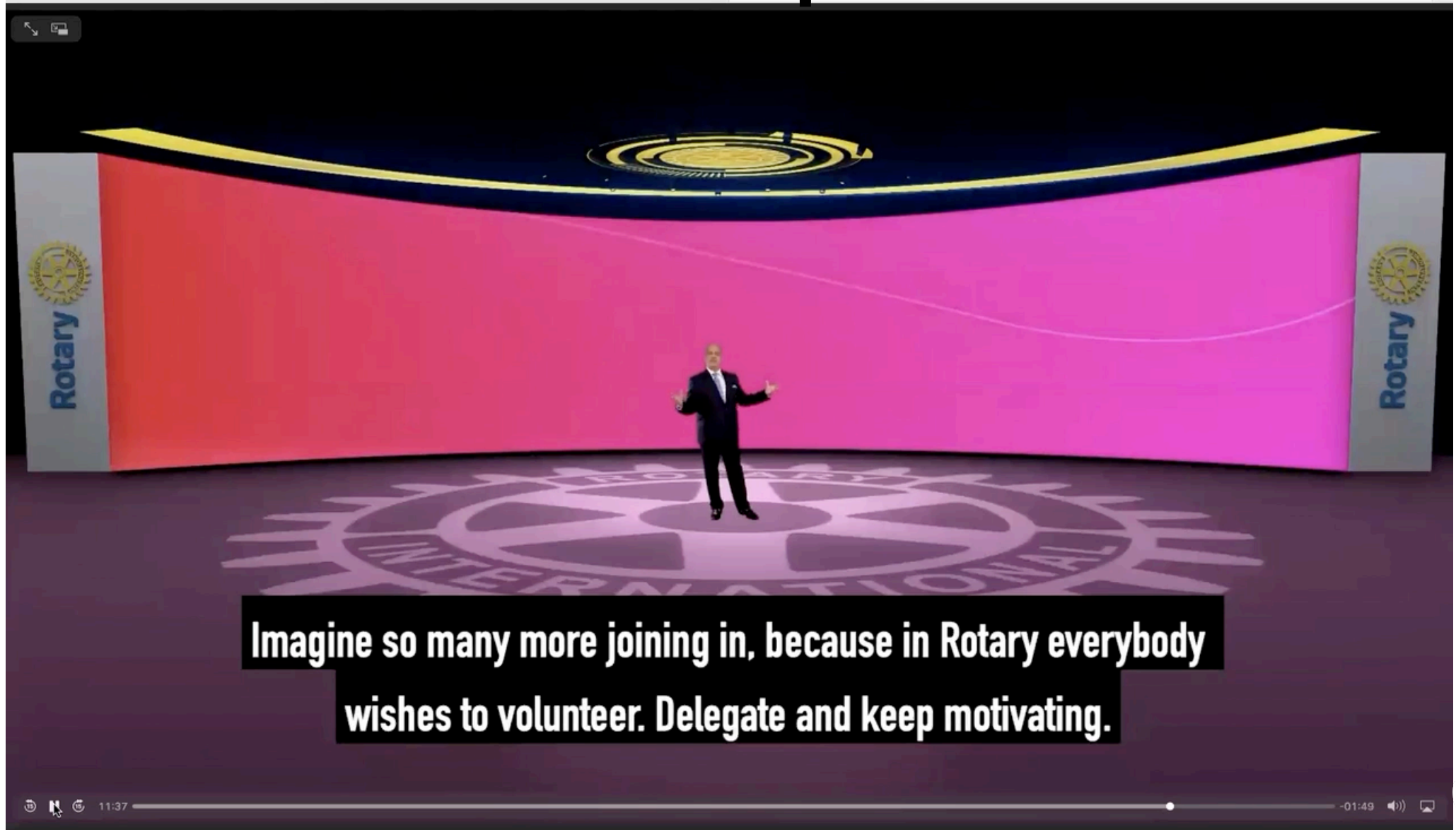


SERVE TO CHANGE LIVES



SERVE TO CHANGE LIVES

# Shekhar Mehta : boodschap voor de Voorzitters



SERVE TO CHANGE LIVES



SERVE TO CHANGE LIVES



SERVE TO CHANGE LIVES